

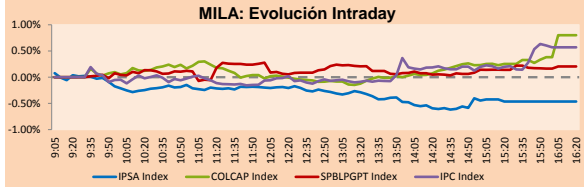
PULSO BURSÁTIL

Lima, January 23, 2018

MILA

Main Indices	Close	1 D	5 D	1 M	YTD	Market Cap. (US\$ bill)
▼ IPSA (Chile)	5,799.81	-0.46%	0.94%	4.74%	4.23%	230.82
▼ IGPA (Chile)	29,154.83	-0.41%	0.84%	4.68%	4.20%	265.50
▲ IGBC (Colombia)	12,111.65	1.11%	2.73%	7.66%	5.52%	114.91
▲ COLCAP (Colombia)	1,570.34	0.80%	2.03%	5.11%	3.75%	116.52
▲ S&P/BVL (Perú)*	20,991.09	0.20%	0.73%	6.77%	5.09%	111.15
▼ S&P/BVL SEL (Perú)	385.03	-0.04%	-0.07%	6.60%	4.62%	89.32
▼ S&P/BVL LIMA 25	31,854.21	-0.20%	-0.92%	4.84%	3.53%	103.08
▲ IPC (México)	50,260.25	0.57%	1.55%	3.87%	1.84%	319.51
▼ S&P MILA 40	780.03	-0.15%	1.57%	8.35%	6.99%	335.08

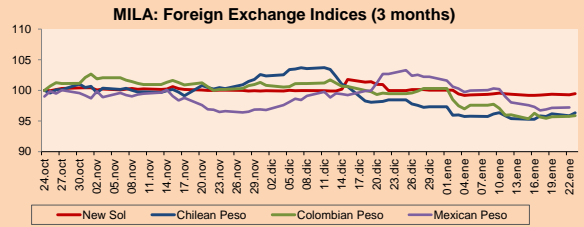
* Market Cap. Of the last price Legend: Variation 1D: 1 day; 5D: 5 days; 1M: 1 Month; YTD: Var%12/31/17 to date



Source: Bloomberg

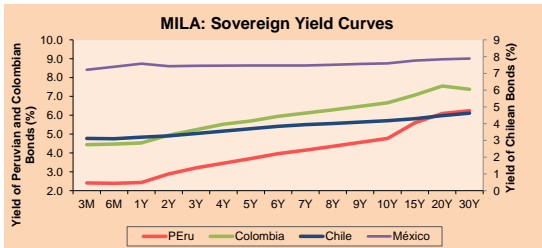
Currency	Price	1D*	5D*	30 D*	YTD*
▲ New Sol (PEN)	3,2196	0.20%	0.28%	-0.50%	-0.56%
▲ Chilean Peso (CLP)	609.20	0.51%	1.10%	-2.15%	-1.01%
▲ Colombian Peso (COP)	2,855.19	0.13%	-0.39%	-3.59%	-4.41%
▲ Mexican Peso (MXN)	18.70	0.07%	-0.38%	-5.33%	-4.89%

* Legend: Variation 1D: 1 day; 5D: 5 days; 1M: 1 Month; YTD: Var%12/31/17 to date



Base: 24/10/17=100 Source: Bloomberg

Instrument	Currency	Price	Bid Yield (%)	Ask Yield (%)	Duration
PERU 4.125 08/25/2027	USD	108.405	3.13	3.08	7.89
PERU 7.125 03/30/19	USD	105.997	2.06	1.86	1.12
PERU 7.35 07/21/25	USD	129.23	3.00	2.94	6.05
PERU 8.75 11/21/33	USD	157.978	3.85	3.81	10.06
PERU 6.55 03/14/37	USD	135.285	3.93	3.90	11.59
PERU 5.625 11/18/2050	USD	127.995	4.08	4.06	16.88
CHILE 2.25 10/30/22	USD	98.1	2.71	2.64	4.48
CHILE 3.875 08/05/20	USD	103.81	2.35	2.28	2.37
CHILE 3.625 10/30/2042	USD	99.83	3.65	3.62	16.28
COLOM 11.75 02/25/20	USD	118.978	2.42	2.30	1.83
COLOM 11.85 03/09/28	USD	169.459	3.63	3.57	6.83
COLOM 10.375 01/28/33	USD	157.003	5.01	4.89	8.90
COLOM 7.375 09/18/37	USD	134.457	4.69	4.66	11.47
COLOM 6.125 01/18/41	USD	121.13	4.64	4.61	13.32
MEX 4 10/02/23	USD	103.71	3.30	3.26	5.04
MEX5.55 01/45	USD	111.572	4.796	4.768	14.68



Source: Bloomberg

Equity

Largest gains	Exchange	Amt.	Price	▲%
VICONTO	Santia.	CLP	29.40	4.63
PASUR	Santia.	CLP	7999.00	4.56
ECOPETROL	Colomb.	COP	2705.00	4.44
SM-CHILE D	Santia.	CLP	320.00	2.89

Per Turnover	Exchange	Amount (US\$)
SQM-B	Santia.	29,472,685
ECOPETROL	Colomb.	24,719,591
CENCOSUD	Santia.	23,705,647
CMPC	Santia.	9,769,071
CHILE	Santia.	9,387,145

Largest losses	Exchange	Amt.	Price	▼%
SALFACORP	Santia.	CLP	1204.70	-4.96
DUNCANFOX	Santia.	CLP	1100.00	-4.35
ATACOB1	Lima	PEN	0.67	-4.29
CAP	Santia.	CLP	7779.60	-4.17

Per Volume	Exchange	Volume
BSANTANDER	Santia.	85,047,729
VAPORES	Santia.	59,079,296
CHILE	Santia.	54,986,419
NORTEGRAN	Santia.	41,204,723
ECOPETROL	Colomb.	26,581,818

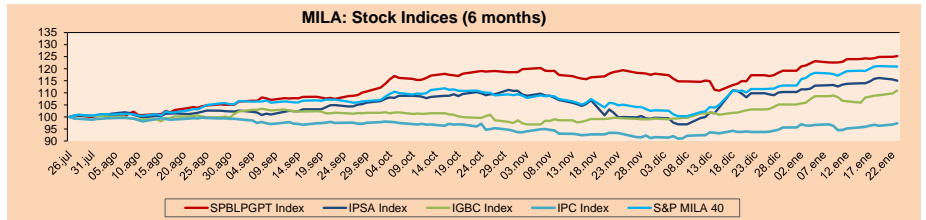
MILA

Peru: The General Index of the BVL of Peru ended today's session with a positive return of +0.20%. The index maintains an accumulated positive annual trend of +5.09% in local currency, while the adjusted return to foreign currency is +5.68%. Then, the S&P/BVL Peru SEL obtained a negative result of -0.04%, while the S&P/BVL LIMA 25 decreased +0.20%. The spot PEN reached S/3.2192.

Chile: The IPSA index ended the day with a negative result of -0.48%. The sectors of the index with the most negative results were Energy (-2.83%) and Real estate (-1.95%). On the other hand, the values with the most bearish results were Salfacorp SA (-4.96%) and CAP SA (-4.17%).

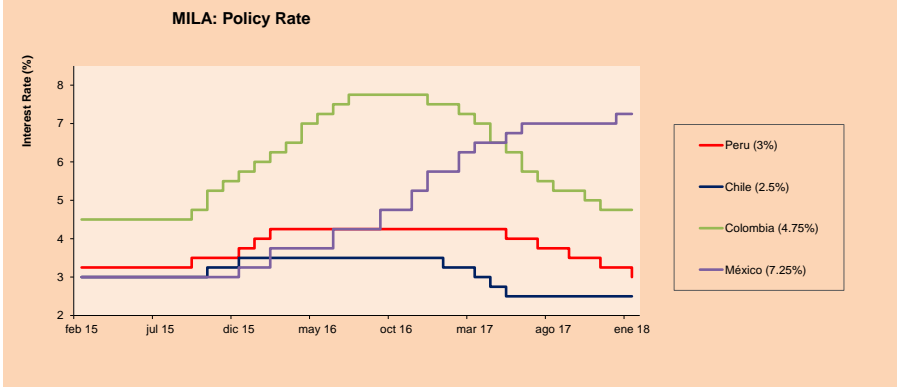
Colombia: The COLCAP index closed the session with positive results of +0.80%. The sectors with higher yields were Energy (+4.25%) and Telecommunications Services (+2.35%). In addition, the stocks with the highest yields were Ecopetrol SA (+4.44%) and Empresa de Telecomunicaciones SA (+2.35%).

Mexico: Mexico's IPC index closed today's session with a positive return of +0.57%. The sectors of the index that generated the most positive returns were Public Services (+1.69%) and Finance (+1.26%). Finally, the shares with the highest yields were Controladora Vuela Compañía de Aviación SAB de CV (+2.40%) and Grupo Financiero Banorte SAB de CV (+2.04%).



Base: 27/07/17=100 Source: Bloomberg

ETFs	Curr.	Close	1D	5D	30 D	YTD	Exchange
▼ iShares MSCI All Peru Caped Index Fund	USD	43.39	-0.41%	0.63%	6.56%	5.88%	NYSE Arca
▲ iShares MSCI Chile Capped	USD	54.89	-1.35%	0.75%	6.21%	5.23%	BATS
▲ Global X MSCI Colombia	USD	15.46	0.65%	2.52%	8.04%	7.09%	NYSE Arca
▲ iShares MSCI Mexico Capped	USD	52.52	-0.06%	1.65%	9.05%	6.55%	NYSE Arca
▲ iShares MSCI Emerging Markets	USD	50.97	0.47%	3.35%	9.61%	8.17%	NYSE Arca
▲ Vanguard FTSE Emerging Markets	USD	50.03	0.36%	3.73%	10.13%	8.97%	NYSE Arca
▲ iShares Core MSCI Emerging Markets	USD	61.38	0.39%	3.21%	9.39%	7.87%	NYSE Arca
▲ iShares JP Morgan Emerging Markets Bonds	USD	64.61	0.20%	2.44%	7.34%	6.34%	BATS
▼ Morgan Stanley Emerging Markets Domestic	USD	8.05	-0.62%	-0.37%	4.68%	4.55%	New York



Source: Bloomberg

Capital Market Laboratory Coordinator: Economist Bruno Bellido Anicam
Support: Kaori Olulo, Jairo Trujillo, Mario Villar
e-mail: pulsobursatil@ulima.edu.pe
facebook: www.facebook.com/pulsobursatil.ul
Phone number : 4376767 Anexes: 35340 - 35310

PULSO BURSÁTIL



WORLD

Table with columns: Main Indices, Close, 1 D*, 5 D*, 1 M*, YTD*, Market Cap. (US\$ MILL.). Lists indices like Dow Jones (USA), Standard & Poor's 500 (USA), NASDAQ Composite (USA), etc.

Equity

Table with columns: Wall Street (Stocks from S&P 500), Largest gains, Curr., Price, Exchange, Largest losses, Curr., Price, Exchange. Lists various stock indices and their performance.

Global Overview

United States:

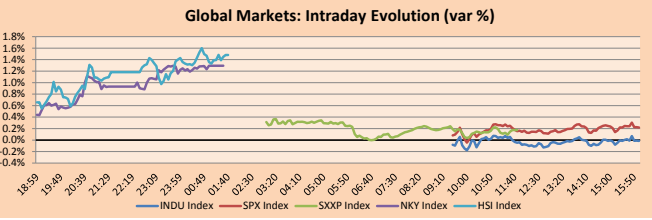
The US stock market ended the day with positive results, because the partial closure of the government came to an end. In business news, the price of shares of Mattel inc. rose around 12%, reaching its highest level since November 30, however, the company could not explain such rise...

Europe:

The European stock market ended the day today with positive results among its main indices. This happens after US senators reached an agreement to end the US government shutdown that began due to the failure to pass legislation to finance agencies and government operations last Friday, January 21.

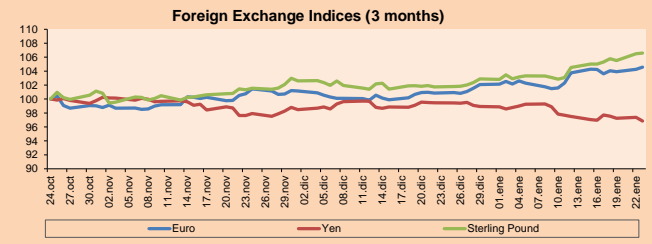
Asia:

The Asian stock market closed the day with positive results among its main indices. Asian stocks won today for the good results presented in the United States. Indexes in Hong Kong, China, Japan and South Korea grew more than 1%.



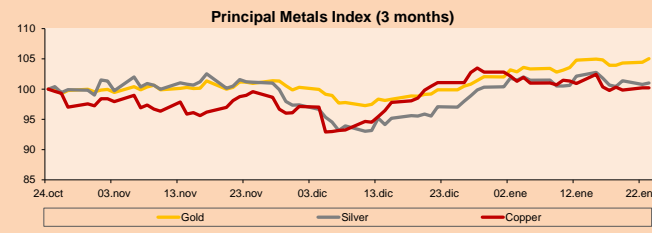
Source: Bloomberg

Table with columns: Currency, Price, 1 D*, 5 D*, 1 M*, YTD*. Lists currencies like Euro, Yen, Sterling Pound, Hong Kong Dollar, Brazilian Real, Argentine Peso.



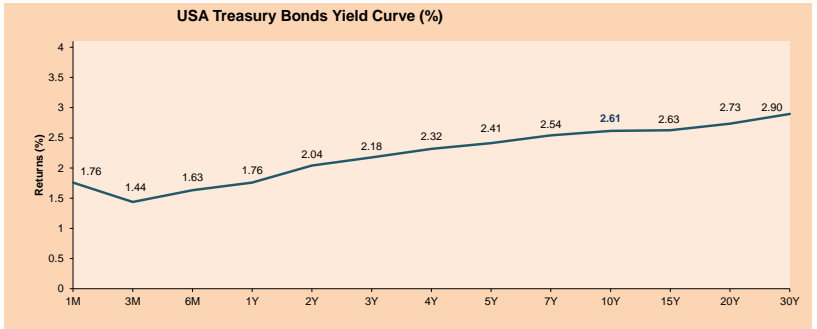
Base: 24/10/17=100 Source: Bloomberg

Table with columns: Commodities, Close, 1 D*, 5 D*, 1 M*, YTD*. Lists commodities like Oro (US\$ Oz. T) (LME), Plata (US\$ Oz. T) (LME), Cobre (US\$ TM) (LME), etc.



Base: 24/10/17=100 Source: Bloomberg

Table with columns: Curr., Close, 1D, 5D, 30D, YTD, Exchange. Lists various ETFs and funds like SPDR S&P 500 ETF TRUST, ISHARES MSCI EMERGING MARKET, etc.



Source: Bloomberg

Capital Market Laboratory Coordinator: Economist Bruno Bellido Anicama Support: Kaori Olulo, Jairo Trujillo, Mario Villar e-mail: pulsoeursatil@ulima.edu.pe

PULSO BURSÁTIL

LIMA

Stocks

Ticker	Currency	Price	1D*	5D*	30D*	YTD*	Frequency	Volume (US\$)	Beta	Dividend Yield (%)	Price Earning	Market Cap. (M US\$)	Economic Sector*	Index Weight
▲ ALICORC1 PE**	S/.	11.48	0.26%	-2.30%	8.30%	8.30%	100.00%	419,803	0.95	1.22	24.08	3,042.64	Industrial	3.53%
▼ ATACOCB1 PE**	S/.	0.67	-4.29%	-4.29%	3.08%	-1.47%	100.00%	155,510	2.36	0.00	-	217.65	Mining	1.02%
- BACKUS11 PE**	S/.	18.30	0.00%	-0.54%	-0.54%	-0.60%	63.16%	522,070	0.43	0.00	5.31	9,025.40	Industrial	0.82%
▲ BAP PE**	US\$	232.80	1.26%	4.07%	12.19%	11.92%	100.00%	860,407	1.03	3.69	-	18,499.87	Diverse	5.82%
▼ BVN PE**	US\$	15.15	0.07%	2.16%	10.58%	7.29%	100.00%	1,793,291	1.17	0.55	-	4,169.72	Mining	5.88%
▼ CASAGRC1 PE**	S/.	5.73	-0.69%	-3.70%	-5.60%	-7.43%	100.00%	33,382	0.75	7.04	15.30	149.91	Agricultural	1.31%
▲ CONTINC1 PE**	S/.	4.32	0.70%	-1.37%	4.10%	4.10%	78.95%	34,081	0.79	3.43	15.88	6,552.08	Finance	2.85%
▼ CORARE11 PE**	S/.	0.72	-1.37%	0.00%	-2.70%	0.00%	100.00%	19,330	1.57	5.19	9.62	299.45	Industrial	1.72%
▼ CPACASC1 PE**	S/.	8.32	-0.95%	-0.36%	2.09%	2.09%	100.00%	237,216	0.64	4.21	31.46	1,103.91	Industrial	2.38%
▼ CVERDEC1 PE**	US\$	30.37	-0.43%	-2.03%	4.01%	2.26%	100.00%	75,418	1.36	0.00	43.01	10,631.20	Mining	5.25%
▲ ENGEPEC1 PE**	S/.	1.90	3.83%	1.60%	6.15%	-4.04%	84.21%	2,772	0.93	3.36	18.21	1,707.34	Public Services	1.44%
- ENDISPC1**	S/.	5.62	0.00%	0.36%	1.26%	-0.35%	68.42%	2,095	0.98	3.39	12.14	1,114.65	Public Services	0.98%
▼ FERREYC1 PE**	S/.	2.57	-0.39%	-1.15%	1.58%	0.78%	100.00%	109,287	1.18	5.00	9.21	809.67	Diverse	4.90%
- GRAMONC1 PE**	S/.	1.95	0.00%	-2.50%	2.09%	4.28%	94.74%	198,143	1.58	0.00	11.80	399.77	Diverse	4.05%
▲ IFS PE**	US\$	40.01	0.28%	-0.45%	7.55%	3.92%	89.47%	991,701	0.59	3.25	14.13	4,525.57	Diverse	7.22%
▼ INRETC1 PE**	US\$	20.59	-0.05%	-1.01%	2.44%	-1.95%	94.74%	636,868	1.00	0.94	24.83	2,116.80	Diverse	5.28%
- LUSURC1 PE**	S/.	12.10	0.00%	1.26%	1.68%	0.41%	89.47%	76,981	0.52	5.12	14.17	1,830.08	Public Services	1.81%
▲ MILPOC1 PE**	S/.	5.11	0.20%	-0.78%	11.09%	11.09%	100.00%	14,351	1.18	16.77	11.55	2,102.29	Mining	1.56%
- MINSUR11 PE**	S/.	1.91	0.00%	-4.50%	6.70%	6.11%	89.47%	28,216	1.72	3.61	13.36	1,710.32	Mining	3.09%
▼ PML PE**	US\$	0.30	-3.23%	-9.37%	0.00%	-6.25%	100.00%	36,003	1.41	0.00	-	78.01	Mining	2.12%
- RELAPAC1 PE**	S/.	0.35	0.00%	-1.13%	17.00%	13.23%	100.00%	91,429	1.48	0.00	5.40	385.37	Industrial	2.12%
▼ SCCO PE**	US\$	49.18	-1.93%	-0.65%	5.54%	3.41%	89.47%	84,304	1.20	1.20	31.94	38,017.54	Mining	2.14%
▼ SIDERC1 PE**	S/.	0.47	-2.11%	-2.11%	-4.12%	-3.12%	89.47%	5,777	1.71	0.00	4.24	177.35	Industrial	1.43%
- TV PE**	US\$	1.23	0.00%	-3.15%	8.85%	2.50%	100.00%	135,586	1.48	0.00	-	1,015.64	Mining	2.93%
▼ UNACEMC1 PE**	S/.	2.94	-1.34%	-2.00%	-0.34%	-2.00%	89.47%	45,544	0.75	1.77	31.56	1,503.52	Industrial	3.00%
▼ VOLCABC1 PE**	S/.	1.37	-0.72%	-2.14%	2.24%	3.79%	100.00%	1,922,601	1.82	1.89	17.75	3,170.41	Mining	5.90%

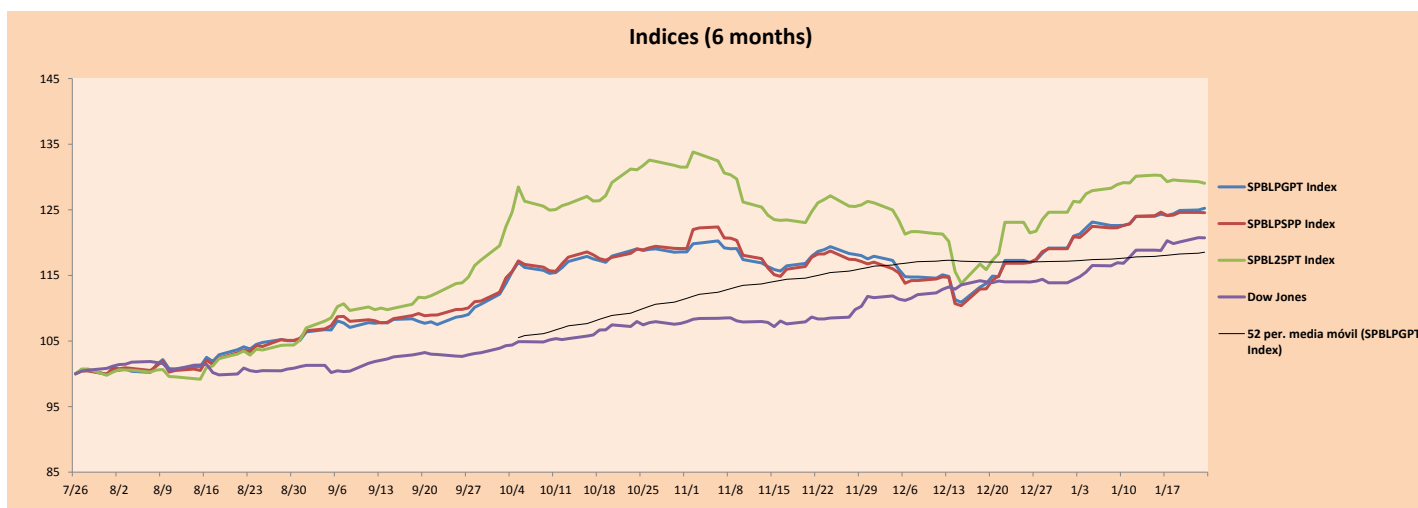
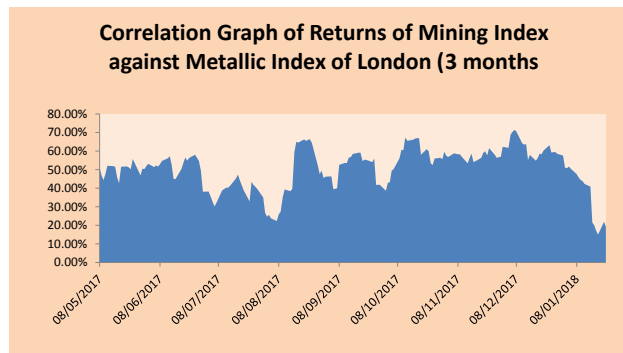
Quantity of shares: 26
 Source: Bloomberg, Económica
 * Bloomberg Industry Classification System
 ** PER is used in the stock market and original currency of the instrument
 *Legend: Variation 1D: 1 Day; 5D: 5 Days; 1M: 1 Month; YTD: Var.% 12/31/17 to date

Up 7
 Down 12
 Hold 7

Sectorial Indices

	Close	1D*	5D*	30D*	YTD*	Beta
▼ Mining Index	370.22	-0.72%	-0.23%	6.36%	4.15%	1.12
▲ Consumer Index	937.69	0.16%	-1.61%	0.66%	4.00%	0.66
▼ Industrial Index	239.34	-0.65%	-1.04%	2.00%	1.43%	1.08
▲ Banking and Financial Index	1,178.30	1.31%	3.78%	10.78%	10.21%	1.09
▼ Construction Index	268.43	-0.84%	-1.02%	1.59%	1.24%	0.97
▲ Services Index	409.34	1.25%	1.87%	3.94%	-1.74%	0.52
▲ Juniors Index	41.44	-2.08%	-7.06%	-0.10%	-5.45%	1.48
▲ Electric Index	399.61	1.25%	1.87%	3.94%	-1.74%	0.52

*Legend: Variation 1D: 1 Day; 5D: 5 Days; 1M: 1 Month; YTD: Var.% 12/31/17 to date



Source: Bloomberg

Capital Market Laboratory Coordinador: Economist Bruno Bellido Anicama
 Support: Kaori Olulo, Jairo Trujillo, Mario Villar
 e-mail: pulsobursatil@ulima.edu.pe
 facebook: www.facebook.com/pulsobursatil.ul
 Phone number : 4376767 Anexes: 35340 - 35310

PULSO BURSÁTIL

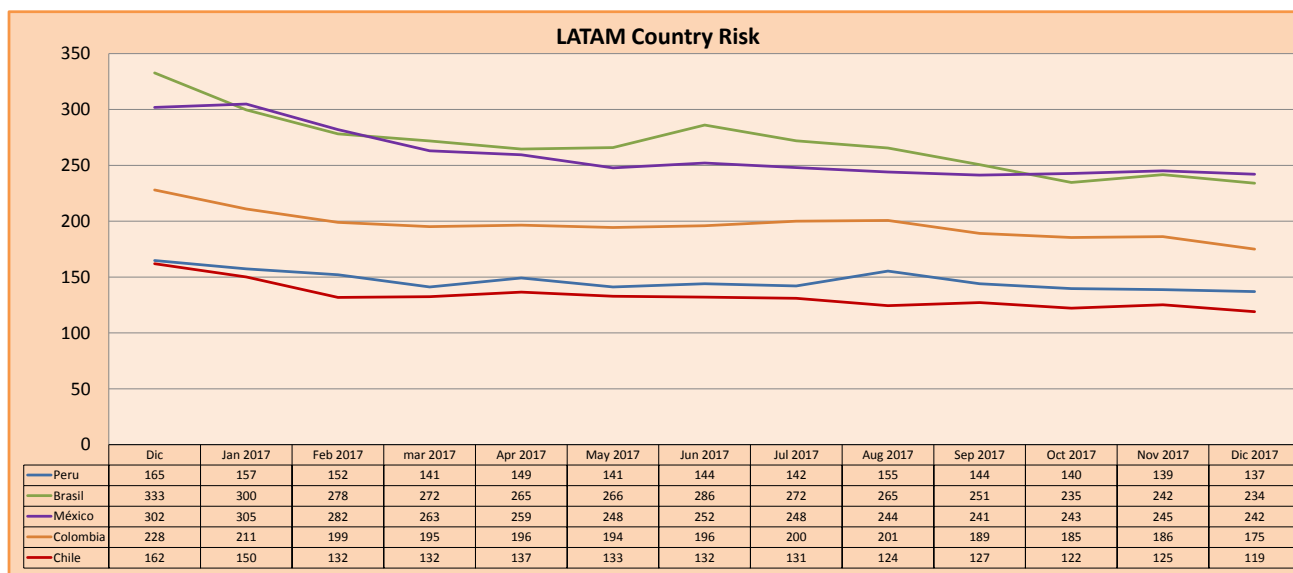
SOVEREIGN RATING

RISK RATINGS			
Moody's	S&P	Fitch	
Aaa	AAA	AAA	Prime
Aa1	AA+	AA+	High credit quality
Aa2	AA	AA	
Aa3	AA-	AA-	
A1	A+	A+	Medium-high grade, with low credit risk
A2	A	A	
A3	A-	A-	
Baa1	BBB+	BBB+	Moderate Credit Risk
Baa2	BBB	BBB	
Baa3	BBB-	BBB-	
Ba1	BB+	BB+	It has speculative elements and it is subject to substantial credit risk
Ba2	BB	BB	
Ba3	BB-	BB-	
B1	B+	B+	It is considered speculative and it has high credit risk
B2	B	B	
B3	B-	B-	
Caa1	CCC+		Bad credit conditions and it is subject to high credit risk
Caa2	CCC		
Caa3	CCC-	CCC	
Ca	CC		Very close to default or in default
	C		
C	D	DDD DD D	

Source: Bloomberg

Latin America Credit Rating			
Clasificadora de riesgo			
Country	Moody's	Fitch	S&P
Peru	A3	BBB+	BBB+
Mexico	A3	BBB+	BBB+
Venezuela	Caa3	RD	SD
Brazil	Ba2	BB	BB-
Colombia	Baa2	BBB	BBB-
Chile	Aa3	A	A+
Argentine	B2	B	B+
Panama	Baa2	BBB	BBB

Source: Bloomberg



Source: Bloomberg

Capital Market Laboratory Coordinator: Economist Bruno Bellido Anicama
Support: Kaori Olulo, Jairo Trujillo, Mario Villar
e-mail: pulsobursatil@ulima.edu.pe
facebook: www.facebook.com/pulsobursatil.ul
Phone number : 4376767 Anexxes: 35340 - 35310