

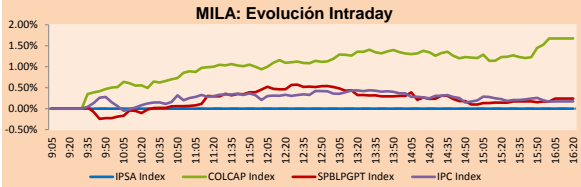
PULSO BURSÁTIL

Lima, January 16, 2018

MILA

Main Indices	Close	1 D	5 D	1 M	YTD	Market Cap. (US\$ bill)
▲ IPSA (Chile)	5,745.95	0.22%	0.71%	9.77%	3.26%	228.43
▲ IGPA (Chile)	28,911.17	0.28%	0.75%	10.20%	3.33%	263.29
▲ IGBC (Colombia)	11,789.30	2.00%	-0.79%	7.06%	2.71%	109.60
▲ COLCAP (Colombia)	1,539.10	1.67%	-0.53%	5.06%	1.68%	111.42
▲ S&P/BVL (Perú)*	20,838.56	0.24%	1.41%	12.10%	4.33%	110.92
▲ S&P/BVL SEL (Perú)	385.30	0.45%	1.95%	12.92%	4.69%	88.99
▼ S&P/BVL LIMA 25	32,149.00	-0.05%	1.08%	14.48%	4.49%	102.79
▲ IPC (México)	49,491.72	0.21%	-0.42%	2.93%	0.28%	313.09
▲ S&P MILA 40	768.70	0.15%	1.19%	13.59%	5.44%	327.75

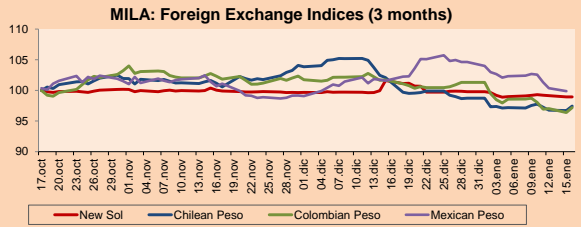
* Market Cap. Of the last price Legend: Variation 1D: 1 day; 5D: 5 days; 1M: 1 Month; YTD: Var%/12/31/16 to date



Source: Bloomberg

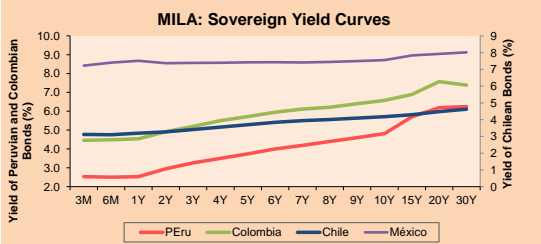
Currency	Price	1D*	5D*	30 D*	YTD*
- New Sol (PEN)	3.2105	0.00%	-0.25%	-2.62%	-0.84%
▲ Chilean Peso (CLP)	607.30	0.75%	-0.10%	-4.54%	-1.32%
▲ Colombian Peso (COP)	2,864.64	0.83%	-1.57%	-4.45%	-4.06%
▼ Mexican Peso (MXN)	18.77	-0.47%	-2.45%	-1.83%	-4.53%

* Legend: Variation 1D: 1 day; 5D: 5 days; 1M: 1 Month; YTD: Var%/12/31/16 to date



Base: 17/10/17=100 Source: Bloomberg

Instrument	Currency	Price	Bid Yield (%)	Ask Yield (%)	Duration
PERU 4.125 08/25/2027	USD	109.143	3.04	3.00	7.91
PERU 7.125 03/30/19	USD	106.147	2.06	1.77	1.14
PERU 7.35 07/21/25	USD	129.788	2.93	2.88	5.90
PERU 8.75 11/21/33	USD	159.033	3.79	3.75	10.10
PERU 6.55 03/14/37	USD	136.615	3.85	3.82	11.64
PERU 5.625 11/18/2050	USD	129.503	4.01	3.99	17.02
CHILE 2.25 10/30/22	USD	98.382	2.65	2.57	4.50
CHILE 3.875 08/05/20	USD	104.048	2.27	2.20	2.39
CHILE 3.625 10/30/2042	USD	100.82	3.59	3.56	16.36
COLOM 11.75 02/25/20	USD	119.277	2.36	2.24	1.85
COLOM 11.85 03/09/28	USD	169.979	3.60	3.54	6.85
COLOM 10.375 01/28/33	USD	158.5	4.95	4.75	8.94
COLOM 7.375 09/18/37	USD	134.85	4.67	4.63	11.49
COLOM 6.125 01/18/41	USD	121.217	4.63	4.60	13.01
MEX 4 10/02/23	USD	104.23	3.21	3.16	5.06
MEX5.55 01/45	USD	112.065	4.767	4.737	14.38



Source: Bloomberg

Equity	Exchange	Amt.	Price	▲%
Largest gains				
ALICORC1	Lima	PEN	11.75	3.98
PFBCOLOM	Colomb.	COP	31160.00	3.87
ECOPETROL	Colomb.	COP	2420.00	3.64
TEF	Lima	USD	10.00	3.63

Per Turnover	Exchange	Amount (US\$)
ECOPETROL	Colomb.	27,002,842
PFBCOLOM	Colomb.	10,461,301
CPACASC1	Lima	4,105,669
BCOLOMBIA	Colomb.	2,568,454
EXITO	Lima	2,334,581

Largest losses	Exchange	Amt.	Price	▼%
ENKA	Colomb.	COP	8.33	-6.93
ALT	Lima	USD	0.03	-6.25
TV	Lima	USD	1.27	-4.51
ATACOB1	Lima	PEN	0.70	-4.11

Per Volume	Exchange	Volume
ECOPETROL	Colomb.	32,134,766
ENKA	Colomb.	3,950,000
BVC	Colomb.	2,968,292
PFAVAL	Colomb.	2,280,581
VOLCABC1	Lima	1,663,093

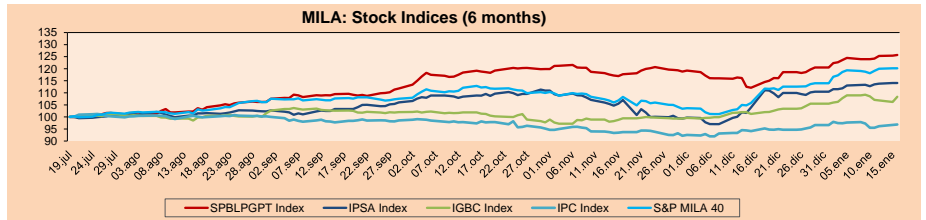
MILA

Peru: The General Index of the BVL of Peru ended today's session with a positive return of +0.24%. The index maintains a cumulative positive annual trend of +4.33% in local currency, while the adjusted return on foreign currency is +5.21%. Then, the S&P/BVL Peru SEL obtained a positive result of +0.45%, while the S&P/BVL LIMA 25 decreased -0.05%. The spot PEN reached S/3.2105.

Chile: The Santiago Stock Exchange did not open today for the holiday declared because of the Pope's visit.

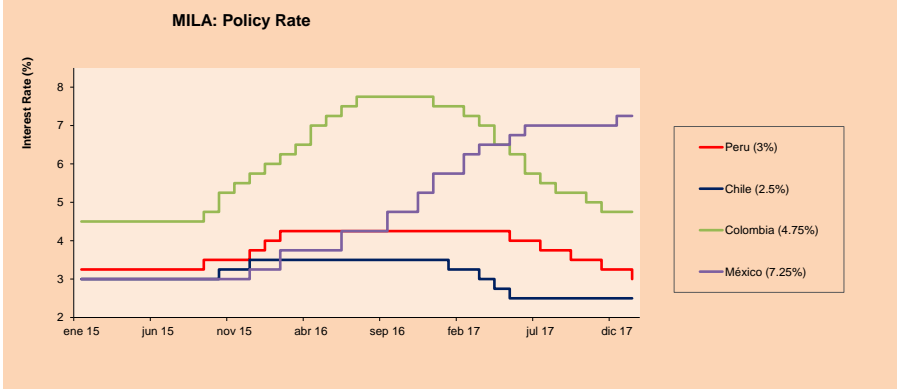
Colombia: The COLCAP index closed the session with positive results of +1.67%. The sectors with upward returns were Energy (+3.33%) and Finance (+2.39%). In addition, the stocks with the highest yields were BanColombia SA (+3.87%) and Ecopetrol SA (+3.64%).

Mexico: The IPC index of Mexico closed the day today with a positive return of +0.21%. The sectors of the index that generated the most positive returns were Industrial (+1.81%) and Products of first necessity (+1.00%). Finally, the shares with the highest yields were Controladora Vuela Compañía de Aviación SAB de CV (+5.87%) and Alfa SAB de CV (+3.25%).



Base: 130 Source: Bloomberg 20/07/17=100

ETFs	Curr.	Close	1D	5D	30 D	YTD	Exchange
▲ iShares MSCI All Peru Caped Index Fund	USD	43.12	0.33%	2.59%	15.05%	5.22%	NYSE Arca
▼ iShares MSCI Chile Capped	USD	54.48	-0.98%	0.22%	14.94%	4.45%	BATS
▼ Global X MSCI Colombia	USD	15.08	-0.33%	1.28%	7.98%	4.45%	NYSE Arca
▲ iShares MSCI Mexico Capped	USD	51.67	1.93%	2.13%	3.34%	4.83%	NYSE Arca
▲ iShares MSCI Emerging Markets	USD	49.32	-0.38%	0.55%	6.82%	4.67%	NYSE Arca
▼ Vanguard FTSE Emerging Markets	USD	48.23	-0.50%	0.77%	6.53%	5.05%	NYSE Arca
▲ iShares Core MSCI Emerging Markets	USD	59.47	-0.54%	0.52%	6.58%	4.52%	NYSE Arca
▼ iShares JP Morgan Emerging Markets Bonds	USD	63.07	-0.27%	0.80%	4.99%	3.80%	BATS
▲ Morgan Stanley Emerging Markets Domestic	USD	8.08	0.62%	2.02%	3.99%	4.94%	New York



Source: Bloomberg

Capital Market Laboratory Coordinator: Economist Bruno Bellido Anicama
Support: Sebastián Butters, Kaori Olulolo, Jairo Trujillo, Mario Villar
e-mail: pulsobursatil@ulima.edu.pe
facebook: www.facebook.com/pulsobursatil.ul
Phone number : 4376767 Anexes: 35340 - 35310



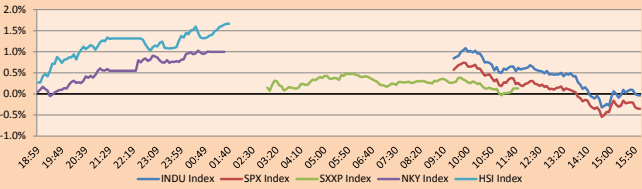
PULSO BURSÁTIL

WORLD

Main Indices	Close	1 D*	5 D*	1 M*	YTD*	Market Cap. (US\$ MIL.)
▼ Dow Jones (USA)	25,792.86	-0.04%	2.02%	4.63%	4.34%	7,043,592
▼ Standard & Poor's 500 (USA)	2,776.42	-0.35%	1.04%	3.76%	3.85%	24,696,454
▼ NASDAQ Composite (USA)	7,223.69	-0.51%	0.93%	4.14%	4.64%	11,420,903
▲ Stoxx EUROPE 600 (Europe)	398.35	0.13%	-0.44%	2.62%	2.36%	8,663,325
▲ DAX (Germany)	13,246.33	0.35%	-1.04%	1.09%	2.54%	1,009,985
▲ FTSE 100 (United Kingdom)	7,755.93	-0.17%	0.32%	3.54%	0.89%	1,551,240
▲ CAC 40 (France)	5,513.82	0.07%	-0.18%	3.08%	3.79%	1,264,446
▲ IBEX 35 (Spain)	10,520.40	0.51%	0.90%	3.65%	4.74%	543,900
▲ MSCI AC Asia Pacific Index	182.04	0.65%	0.82%	7.08%	4.74%	15,536,855
▲ HANG SENG (Hong Kong)	31,904.75	1.81%	2.88%	10.60%	6.64%	3,244,499
▲ SHANGHAI SE Comp. (China)	3,436.59	0.77%	0.66%	5.22%	3.91%	5,360,307
▲ NIKKEI 225 (Japan)	23,951.81	1.00%	0.43%	6.20%	5.21%	3,831,826
▲ BOVESPA (Brazil)	79,831.77	-0.10%	1.23%	9.95%	4.49%	768,292
▼ Merval (Argentina)	33,521.63	-0.30%	4.30%	24.05%	11.49%	132,888

*Legend: Variation 1D: 1 Day; 5D: 5 Days; 1M: 1 Month; YTD: Var.% 12/31/16 to date

Global Markets: Intraday Evolution (var %)

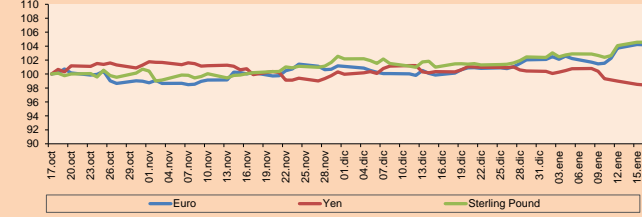


Source: Bloomberg

Currency	Price	1 D*	5 D*	1 M*	YTD*
▼ Euro	1,226.0	-0.03%	2.71%	4.35%	2.12%
▼ Yen	110,450.00	-0.08%	-1.95%	-1.91%	-1.99%
- Sterling Pound	1,379.2	0.00%	1.86%	3.54%	2.06%
▲ Yuan	6,444.0	0.11%	-1.31%	-2.50%	-0.97%
▲ Hong Kong Dollar	7,822.9	-0.01%	0.03%	0.14%	0.11%
▲ Brazilian Real	3,224.1	0.27%	-0.77%	-2.37%	-2.67%
▲ Argentine Peso	18,893.0	0.84%	-0.11%	7.89%	1.45%

*Legend: Variation 1D: 1 Day; 5D: 5 Days; 1M: 1 Month; YTD: Var.% 12/31/16 to date

Foreign Exchange Indices (3 months)

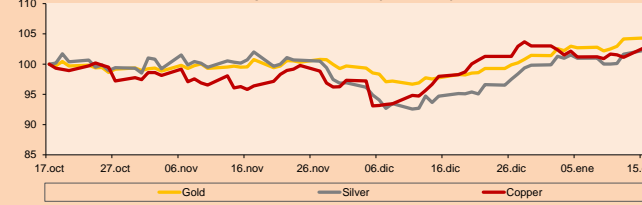


Base: 17/10/17=100
Source: Bloomberg

Commodities	Close	1 D*	5 D*	1 M*	YTD*
▼ Oro (US\$ Oz. T) (LME)	1,338.43	-0.12%	1.95%	6.61%	2.72%
▼ Plata (US\$ Oz. T) (LME)	17.19	-0.92%	1.30%	6.98%	1.49%
- Cobre (US\$ TM) (LME)	7,181.25	0.00%	1.72%	4.76%	-0.36%
- Zinc (US\$ TM) (LME)	3,470.00	0.00%	3.57%	8.29%	3.97%
▼ Petróleo WTI (US\$ Barril) (NYM)	63.88	-0.65%	1.46%	11.43%	5.73%
- Estafío (US\$ TM) (LME)	20,330.00	0.00%	1.77%	6.03%	1.16%
- Plomo (US\$ TM) (LME)	2,583.00	0.00%	1.12%	1.45%	3.95%
- Molibdeno (US\$ TM) (LME)	15,634.00	0.00%	-0.01%	-0.03%	-0.03%
▲ Azúcar #11 (US\$ Libra) (NYB-ICE)	13.59	-4.16%	-7.74%	-0.51%	-10.36%
▲ Cacao (US\$ TM) (NYB-ICE)	1,932.00	0.94%	1.74%	2.93%	2.11%
▼ Café Arábica (US\$ TM) (NYB-ICE)	120.45	-1.47%	-3.76%	-0.25%	-4.56%

*Legend: Variación 1D: 1 Día; 5D: 5 Días; 1M: 1 Mes; YTD: Var.% 31/12/15 a la fecha

Principal Metals Index (3 months)



Base: 17/10/17=100
Source: Bloomberg

Equity

Wall Street (Stocks from S&P 500)

Largest gains	Curr.	Price	▲ %	Exchange	Largest losses	Curr.	Price	▼ %	Exchange
OCOM UW	USD	68.25	4.39	NASDAQ GS	UAA UN	USD	13.81	-8.66	New York
MGM UN	USD	36.03	2.85	New York	VIAB UW	USD	31.38	-7.05	NASDAQ GS
EQIX UW	USD	448.1	2.79	NASDAQ GS	ADS UN	USD	258.07	-6.62	New York
MCK UN	USD	170.66	2.65	New York	CF UN	USD	40.71	-6.46	New York

Europe (Stocks from STOXX EUROPE 600)

Largest gains	Curr.	Price	▲ %	Exchange	Largest losses	Curr.	Price	▼ %	Exchange
PNDORA DC	DKK	603.6	4.72	Copenhagen	RPC LN	GBP	798.6	-4.36	London
IPN FP	EUR	108.7	4.42	EN Paris	FCA IM	EUR	18.73	-4.15	Borsa Italiana
EDF FP	EUR	10.81	3.99	EN Paris	BILL SS	SEK	128.25	-3.75	Stockholm
LXS GY	EUR	72.22	3.91	Xetra	FRES LN	GBP	1378.5	-3.47	London

Global Overview

United States:

The US stock market ended the day with negative results, due to the fact that the former chief strategist of President Donald Trump, Steve Bannon, was summoned last week by Special Advisor Robert Mueller to testify as part of the investigation into possible links between partners of Trump and Russia. On the other hand, the Empire State industrial indicator fell for the third consecutive month, despite the slowdown, the index remains at a level associated with solid growth, continuing a pattern established during the past year and what it shows is that, it is very likely that the national manufacturing index generated a slight fall. On the corporate side, shares of Merck & Co Inc. rose about 7%, after the company announced that its key cancer drug had positive results in a clinical trial, and sales are expected to increase to 9 billion of dollars worldwide by 2026, according to the company Informa Pharma Intelligence. Finally, oil prices fell, contrasting the opinion of the Deutsche Bank, which states that the price of oil is at a very high level and that there is a high probability that the price will make a correction of around 10%.

Europe:

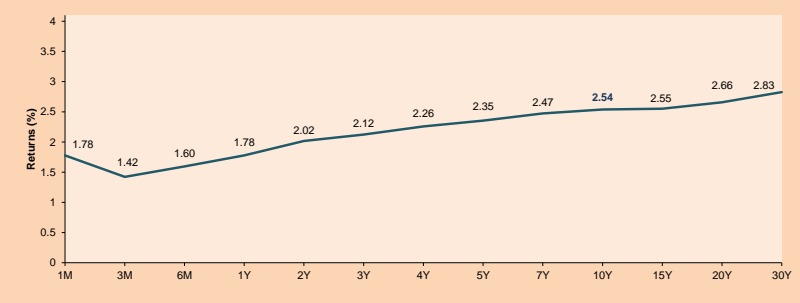
The European stock market finished the day today with mixed results among its main indices. I highlight the British benchmark index, the FTSE 100, which continues to move away from its historical high reached last Friday when closing at -0.17%, after closing at -0.1% on Monday. In more detail, during the session the shares of BP PLC, the British oil company, fell by -2.70% after they announced that they expect to receive a charge of 1.7 billion dollars for the oil spill that occurred on Deepwater Horizon, the country's oil platform. company in the Gulf of Mexico, in 2010. They also announced that they expect to receive an accounting charge of 1.5 billion dollars for the US tax reform. On the other hand, the annual inflation of the United Kingdom reached 3% in December, slightly lower than the 3.1% of the previous month. However, this remains above the target imposed by the Bank of England of 2%. According to Mike van Dulken and Henry Croft, analysts at Accendo Markets, "inflation data are unlikely to have much influence on the current views of the Bank of England's Monetary Policy Committee, although it is certain that they will be monitoring the current rally, and will continue eroding Brexit inflation for the last 18 months".

Asia:

The Asian stock market closed with positive results among its main indices. The main news of the day was the Hong Kong benchmark, "Hang Seng", which broke its record of October 30, 2007 rising to 31,904.75. On the other hand, in China, the Shanghai composite index rose as did the Shenzhen index, although there was a strong sell of shares in mainland China, due to changes in the rules by the China Securities Regulatory Commission during the weekend, which would allow control of loans in the banking sector. Hao Hong, head of research and strategy at the Communications Bank said, "that the CSRC has been issuing new rules during the weekend and also during the week. It is quite unusual. By tightening record loans, internet financing and all that, you're seeing a reduction in credit in the system." On the other hand, the Taiwan benchmark index recorded another record of 28 years. In the same way, the New Zealand benchmark closed with a gain after having registered four days with losses. In Australia, the benchmark "S & P / ASX 200" fell today due to losses in mining stocks due to a decline in metal prices. The company Rio Tinto lost today, despite reaching a maximum of 6 and a half years earlier.

ETFs	Curr.	Close	1D	5D	30 D	YTD	Exchange
SPDR S&P 500 ETF TRUST	USD	276.97	-0.34%	0.89%	3.92%	3.79%	NYSE Arca
ISHARES MSCI EMERGING MARKET	USD	49.32	-0.38%	0.55%	6.82%	4.67%	NYSE Arca
ISHARES IBOX USD HIGH YIELD	USD	87.53	-0.06%	-0.11%	0.37%	0.31%	NYSE Arca
FINANCIAL SELECT SECTOR SPDR	USD	29.15	-0.27%	1.96%	4.82%	4.44%	NYSE Arca
VANECK VECTORS GOLD MINERS E	USD	24.37	1.50%	5.45%	10.82%	4.86%	NYSE Arca
ISHARES RUSSEL 2000 ETF	USD	156.14	-1.28%	0.85%	2.56%	2.41%	NYSE Arca
SPDR GOLD SHARES	USD	127.17	0.17%	1.96%	6.70%	2.85%	NYSE Arca
ISHARES 20+ YEAR TREASURY BO	USD	125.04	0.42%	0.88%	-2.58%	-1.43%	NASDAQ GM
POWERSHARES QQQ TRUST SERIES	USD	164.02	-0.29%	0.90%	4.04%	5.30%	NASDAQ GM
ISHARES NASDAQ BIOTECHNOLOGY	USD	110.60	-1.23%	0.17%	3.75%	3.59%	NASDAQ GM
ENERGY SELECT SECTOR SPDR	USD	76.44	-1.27%	1.61%	11.23%	5.78%	NYSE Arca
PROSHARES ULTRA VIX ST FUTUR	USD	9.75	12.46%	8.82%	-5.98%	-4.51%	NYSE Arca
UNITED STATES OIL FUND LP	USD	12.76	-0.85%	1.51%	11.34%	6.24%	NYSE Arca
ISHARES MSCI BRAZIL ETF	USD	43.08	-0.35%	1.75%	11.15%	6.50%	NYSE Arca
SPDR S&P OIL & GAS EXP & PR	USD	39.00	-1.81%	0.75%	14.44%	4.90%	NYSE Arca
UTILITIES SELECT SECTOR SPDR	USD	50.15	-0.22%	-2.24%	-8.85%	-4.80%	NYSE Arca
ISHARES US REAL ESTATE ETF	USD	77.17	0.27%	-2.09%	-6.42%	-4.74%	NYSE Arca
SPDR S&P BIOTECH ETF	USD	86.84	-3.10%	-0.74%	6.14%	2.32%	NYSE Arca
ISHARES IBOX INVESTMENT GRA	USD	120.94	0.09%	0.42%	-0.70%	-0.51%	NYSE Arca
ISHARES JP MORGAN USD EMERGI	USD	116.14	0.01%	-0.01%	0.08%	0.03%	NASDAQ GM
REAL ESTATE SELECT SECT SPDR	USD	31.34	0.48%	-2.43%	-5.57%	-4.86%	NYSE Arca
ISHARES CHINA LARGE-CAP ETF	USD	49.80	0.02%	2.53%	8.85%	7.86%	NYSE Arca
CONSUMER STAPLES SPDR	USD	56.91	0.46%	-0.14%	0.05%	0.04%	NYSE Arca
VANECK VECTORS JUNIOR GOLD M	USD	35.57	1.80%	6.91%	13.06%	4.22%	NYSE Arca
SPDR BBG BARS HIGH YIELD BND	USD	36.87	0.03%	-0.08%	0.46%	0.41%	NYSE Arca
VANGUARD REIT ETF	USD	78.76	0.19%	-2.06%	-7.43%	-5.09%	NYSE Arca

USA Treasury Bonds Yield Curve (%)



Source: Bloomberg

Capital Market Laboratory Coordinator: Economist Bruno Bellido Anicam
Support: Sebastián Butters, Kaori Olulo, Jairo Trujillo, Mario Villar
e-mail: pulsobursatil@ulima.edu.pe
facebook: www.facebook.com/pulsobursatil.ul
Phone number: 4376767 Anexes: 35340 - 35310

PULSO BURSÁTIL

LIMA

Stocks

Ticker	Currency	Price	1D*	5D*	30D*	YTD*	Frequency	Volume (US\$)	Beta	Dividend Yield (%)	Price Earning	Market Cap. (M US\$)	Economic Sector*	Index Weight
▲ ALICORC1 PE**	S/.	11.75	3.98%	4.44%	18.57%	10.85%	100.00%	252,532	0.95	1.19	24.65	3,122.52	Industrial	3.53%
▼ ATACOCB1 PE**	S/.	0.70	-4.11%	-2.78%	29.63%	2.94%	100.00%	76,013	2.35	0.00	-	212.49	Mining	1.02%
▼ BACKUS11 PE**	S/.	18.40	-0.54%	0.55%	2.11%	-0.05%	50.00%	269,878	0.41	5.66	5.34	9,082.60	Industrial	0.82%
▲ BAP PE**	US\$	223.70	0.63%	1.77%	15.39%	7.55%	100.00%	1,560,042	1.06	3.84	-	17,776.72	Diverse	5.82%
▲ BVN PE**	US\$	14.83	0.88%	4.36%	15.68%	5.03%	100.00%	1,445,236	1.16	0.56	-	4,081.72	Mining	5.88%
▼ CASAGRC1 PE**	S/.	5.95	-1.33%	-1.33%	8.18%	-3.88%	100.00%	9,822	0.74	6.78	15.89	156.11	Agricultural	1.31%
▲ CONTINC1 PE**	S/.	4.38	1.62%	0.69%	12.31%	5.54%	83.33%	23,366	0.80	3.38	16.10	6,661.91	Finance	2.85%
▼ CORARE11 PE**	S/.	0.72	-2.70%	-2.70%	10.77%	0.00%	100.00%	54,740	1.57	5.19	9.62	291.50	Industrial	1.72%
▲ CPACASC1 PE**	S/.	8.35	0.48%	2.96%	7.74%	2.45%	100.00%	4,105,669	0.64	4.19	31.57	1,111.00	Industrial	2.38%
- CVERDEC1 PE**	US\$	31.00	0.00%	0.81%	19.23%	4.38%	100.00%	299,745	1.35	0.00	43.90	10,851.74	Mining	5.25%
- ENGEPEC1 PE**	S/.	1.87	0.00%	-5.56%	10.65%	-5.56%	77.78%	21,724	0.91	0.00	17.92	1,685.15	Public Services	1.44%
- ENDISPC1**	S/.	5.60	0.00%	0.00%	7.69%	-0.71%	61.11%	18,725	0.96	0.00	12.09	1,113.83	Public Services	0.98%
▲ FERREYC1 PE**	S/.	2.60	0.39%	0.39%	14.54%	1.96%	100.00%	310,574	1.18	4.94	9.32	821.44	Diverse	4.90%
▲ GRAMONC1 PE**	S/.	2.00	0.50%	6.38%	11.11%	6.95%	94.44%	812,224	1.56	0.00	12.10	411.18	Diverse	4.05%
▼ IFS PE**	US\$	40.19	-0.02%	1.23%	14.86%	4.39%	88.89%	691,611	0.59	3.23	14.16	4,545.93	Diverse	7.22%
- INRETC1 PE**	US\$	20.80	0.00%	-0.14%	7.49%	-0.95%	94.44%	15,600	1.00	0.00	25.01	2,138.39	Diverse	5.28%
▼ LUSURC1 PE**	S/.	11.95	-0.83%	-0.42%	3.02%	-0.83%	83.33%	1,504,828	0.52	5.19	14.00	1,812.51	Public Services	1.81%
▲ MILPOC1 PE**	S/.	5.15	0.78%	6.19%	26.85%	11.96%	100.00%	106,466	1.16	16.64	11.67	2,124.70	Mining	1.56%
- MINSUR11 PE**	S/.	2.00	0.00%	2.04%	29.03%	11.11%	94.44%	98,957	1.71	3.45	14.03	1,795.98	Mining	3.09%
▲ PML PE**	US\$	0.33	2.48%	0.30%	21.25%	3.44%	94.44%	375,335	1.41	0.00	-	86.08	Mining	2.12%
- RELAPAC1 PE**	S/.	0.36	0.00%	-0.56%	33.46%	14.52%	100.00%	54,613	1.48	0.00	5.48	390.87	Industrial	2.12%
▼ SCCO PE**	US\$	49.50	-0.80%	0.61%	14.06%	4.08%	83.33%	104,428	1.19	1.19	32.14	38,264.91	Mining	2.14%
▼ SIDERC1 PE**	S/.	0.48	-1.25%	-1.04%	13.10%	-1.04%	83.33%	20,689	1.74	0.00	4.33	181.67	Industrial	1.43%
▼ TV PE**	US\$	1.27	-4.51%	2.42%	15.45%	5.83%	94.44%	259,835	1.48	0.00	-	1,048.67	Mining	2.93%
- UNACEMC1 PE**	S/.	3.00	0.00%	3.45%	7.14%	0.00%	88.89%	416,867	0.73	0.00	32.20	1,538.55	Industrial	3.00%
▼ VOLCABC1 PE**	S/.	1.40	-1.41%	-1.41%	17.65%	6.06%	100.00%	729,932	1.82	1.85	18.19	3,202.23	Mining	5.90%

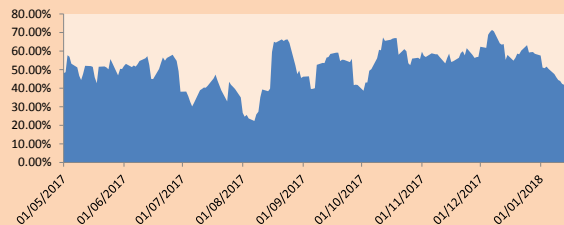
Quantity of shares: 26
 Source: Bloomberg, Económica
 * Bloomberg Industry Classification System
 ** PER is used in the stock market and original currency of the instrument
 *Legend: Variation 1D: 1 Day; 5D: 5 Days; 1M: 1 Month; YTD: Var.% 12/31/16 to date

Sectorial Indices

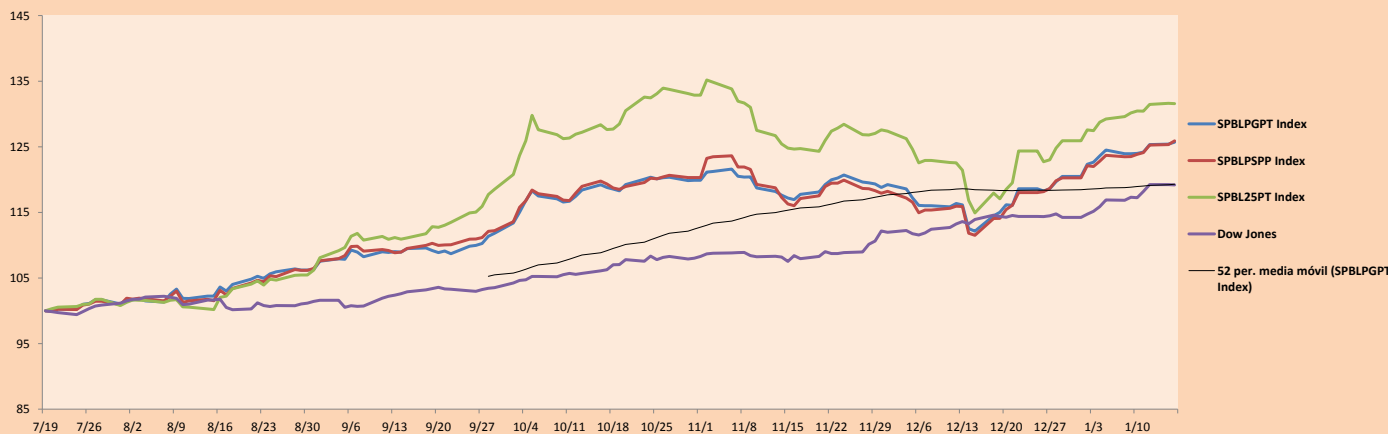
	Close	1D*	5D*	30D*	YTD*	Beta
▼ Mining Index	371.08	-0.52%	1.65%	13.50%	4.39%	1.13
▲ Consumer Index	953.05	2.35%	2.59%	11.95%	5.70%	0.65
▲ Industrial Index	241.86	0.25%	2.21%	10.83%	2.50%	1.08
▲ Banking and Financial Index	1,135.34	0.60%	1.42%	11.97%	6.19%	1.10
▲ Construction Index	271.20	0.19%	3.35%	8.21%	2.29%	0.96
▼ Services Index	401.81	-0.56%	-3.39%	7.08%	-3.55%	0.52
▲ Juniors Index	44.59	1.27%	-1.74%	15.52%	1.73%	1.46
▼ Electric Index	392.27	-0.56%	-3.38%	7.08%	-3.54%	0.52

*Legend: Variation 1D: 1 Day; 5D: 5 Days; 1M: 1 Month; YTD: Var.% 12/31/16 to date

Correlation Graph of Returns of Mining Index against Metallic Index of London (3 months)



Indices (6 months)



Source: Bloomberg

Capital Market Laboratory Coordinator: Economist Bruno Bellido Anicama
 Support: Sebastián Butters, Kaori Olulo, Jairo Trujillo, Mario Villar
 e-mail: pulsobursatil@ulima.edu.pe
 facebook: www.facebook.com/pulsobursatil.ul
 Phone number : 4376767 Anexes: 35340 - 35310

PULSO BURSÁTIL

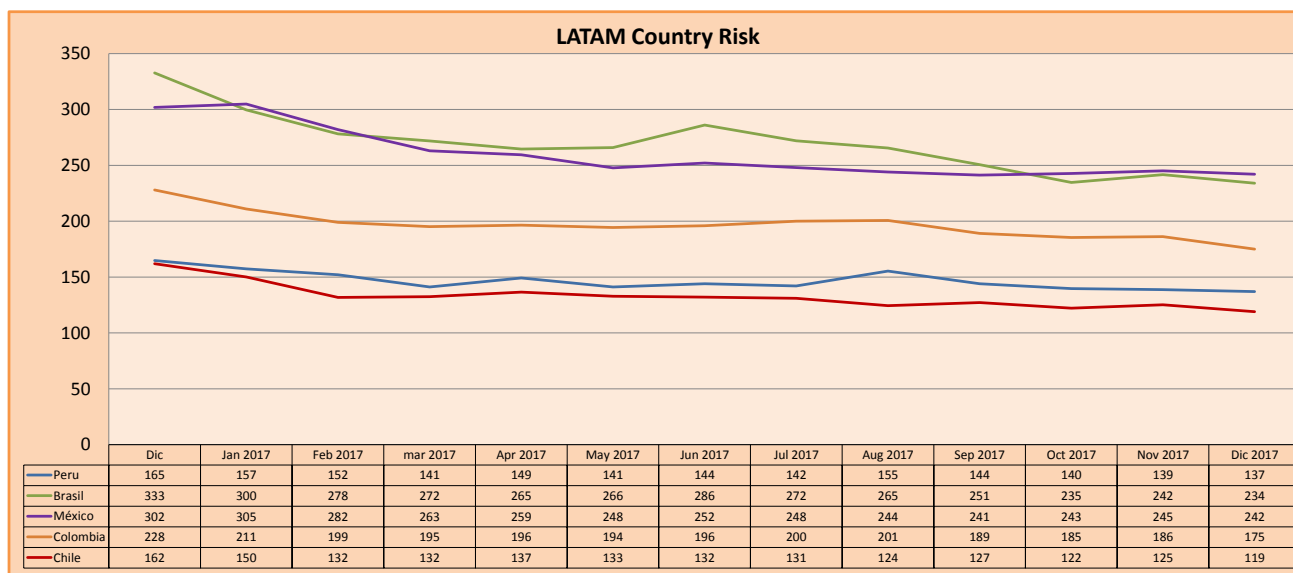
SOVEREIGN RATING

RISK RATINGS			
Moody's	S&P	Fitch	
Aaa	AAA	AAA	Prime
Aa1	AA+	AA+	High credit quality
Aa2	AA	AA	
Aa3	AA-	AA-	
A1	A+	A+	Medium-high grade, with low credit risk
A2	A	A	
A3	A-	A-	
Baa1	BBB+	BBB+	Moderate Credit Risk
Baa2	BBB	BBB	
Baa3	BBB-	BBB-	
Ba1	BB+	BB+	It has speculative elements and it is subject to substantial credit risk
Ba2	BB	BB	
Ba3	BB-	BB-	
B1	B+	B+	It is considered speculative and it has high credit risk
B2	B	B	
B3	B-	B-	
Caa1	CCC+		Bad credit conditions and it is subject to high credit risk
Caa2	CCC		
Caa3	CCC-	CCC	
Ca	CC		Very close to default or in default
	C		
C	D	DDD	

Source: Bloomberg

Latin America Credit Rating			
Clasificadora de riesgo			
Country	Moody's	Fitch	S&P
Peru	A3	BBB+	BBB+
Mexico	A3	BBB+	BBB+
Venezuela	Caa3	RD	SD
Brazil	Ba2	BB	BB-
Colombia	Baa2	BBB	BBB-
Chile	Aa3	A	A+
Argentine	B2	B	B+
Panama	Baa2	BBB	BBB

Source: Bloomberg



Source: Bloomberg

Capital Market Laboratory Coordinator: Economist Bruno Bellido Anicama
 Support: Sebastián Butters, Kaori Olulo, Jairo Trujillo, Mario Villar
 e-mail: pulsobursatil@ulima.edu.pe
 facebook: www.facebook.com/pulsobursatil.ul
 Phone number : 4376767 Anexxes: 35340 - 35310